



THE UNIVERSITY
of
WISCONSIN
MADISON

"Cultural Dimensions of Access to Active Living: Understanding Youth and Adult's Experiences of Health and Place"

Samuel F. Dennis, Jr. PhD, ASLA, *University of Wisconsin - Madison*
Suzanne Gaulocher, MA, MPH, *UW Population Health Fellow*
Pamela McGranahan, MSN, *Public Health - Madison & Dane County*

Active Living Research

2008 Annual Conference

Washington, DC

9 - 12 April 2008

Outline

- ❑ Community Health Assessment Mapping Partnership (CHAMP)
- ❑ Participatory Photo-Mapping (PPM)
- ❑ Case Studies and Outcomes
- ❑ New ways of thinking about old problems?

CHAMP

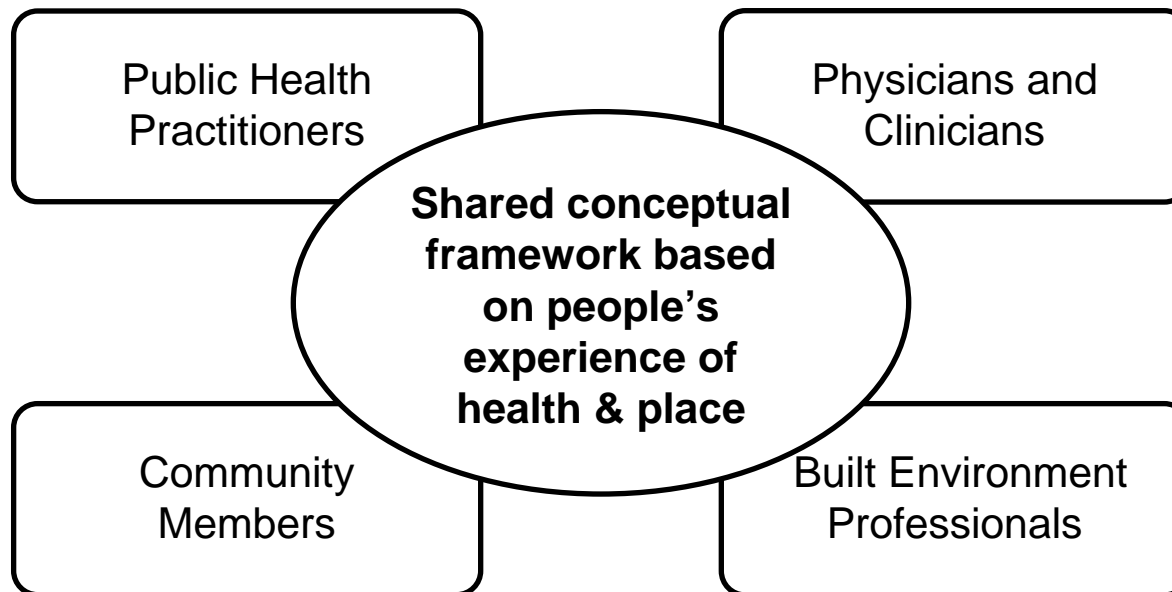
- ❑ A transdisciplinary working group to inform policy at multiple scales
- ❑ To develop and implement a collaborative community health assessment integrating multiple methods
- ❑ To implement community-based participatory research (CBPR) techniques combining population-based data with assessments of the built environment

CHAMP Team

- Samuel Dennis, Jr., PhD, ASLA
Landscape Architecture, Geography
- Suzanne Gaulocher, MA, MPH
Anthropology, Public Health
- Bill Buckingham, MS, PhD Candidate
Cartography, GIS
- Pam McGranahan, MSN
Nursing, Public Health
- Mamadou Ndiaye, MD, MPH
Epidemiology, Public Health
- Brinnon Garrett-Mandel, MPH, MBA
Public Health, Economics
- David Simmons, MPH
Environmental Health



CHAMP Model



Participatory Photo Mapping

Dept. of Family Medicine Dept. of Landscape Architecture



Improving health
and well-being of
communities...



Home

PPM Method

About Us

Where we work

Links

Publications

Contact Us

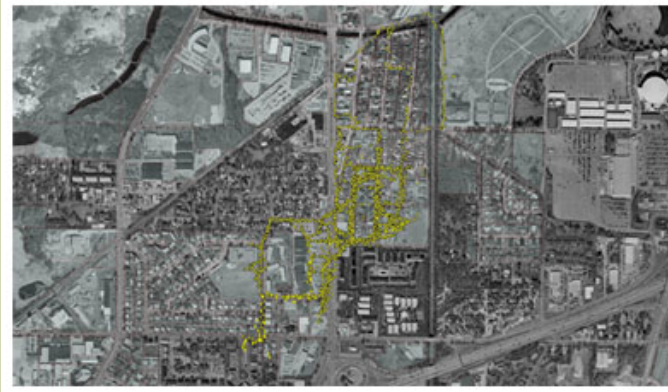
PROJECT HIGHLIGHT



Our goal is to use Participatory Photo Mapping (PPM) to develop and design collaborative projects and networks to improve health and well-being of communities by strengthening health information systems and sharing that information with community members and public health decision-makers. It is all about reaching the goal of **“Healthy People in Healthy Places”**.

What is Participatory Photo Mapping (PPM)?

PPM is a tool for exploring the experience of health and place and for communicating this experience to decision-makers who share a common goal of addressing health. Using a PPM helps to uncover opportunities and barriers related to using the built environment for daily active living.





Hat



Boa constrictor
digesting an
elephant



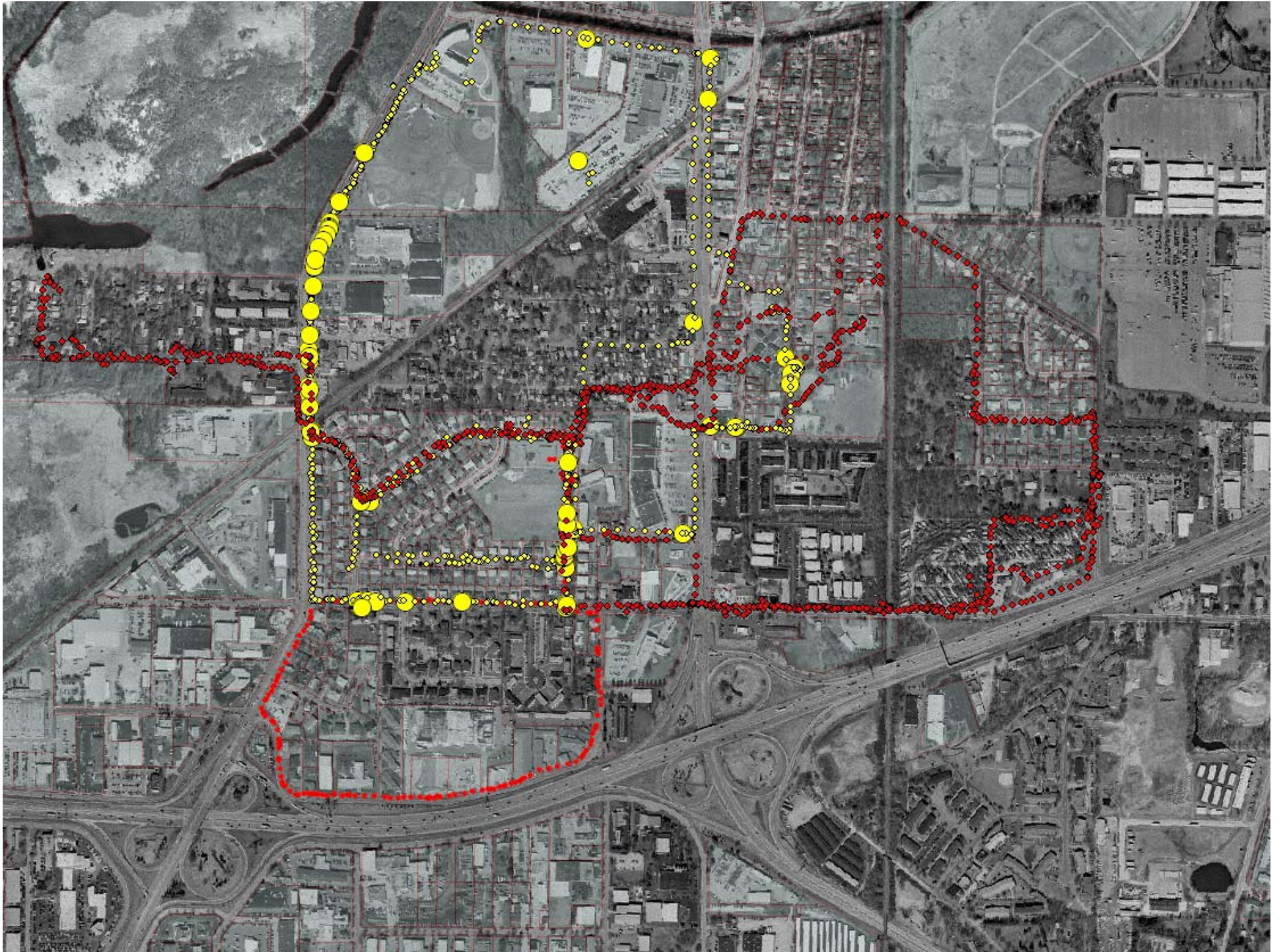
Grown-ups:
“They always need explanations.”



Participatory Photo Mapping (PPM) www.la.wisc.edu/ppm

- Digital Photography
- GPS Tracking
 - Garmin GPSMap 60
- Focus Groups
- Qualitative GIS
 - GPS Photo-Link (geospatial experts)
 - ArcGIS 9.2
 - Atlas.ti/Nvivo 8
- Presentations to decision-makers





Jadon Week #2 Camera #4

T00026



09/28/2006

N 43° 02.558' W 089° 23.477'

906 ft

09/28/2006 4:28:55 PM


Coding text and images (ATLAS.ti)

healthy - ATLAS.ti

File Edit Documents Quotations Codes Memos Networks Views Tools Extras Windows Help

P-Docs P 1: 664406-R1-13-13.jpg Quotes Codes Memos

IMG_0337 - Windows Picture and Fax Viewer



Primary Doc Manager [HU: healthy]

Documents Edit Miscellaneous Output View

I	Name	Media	Quot...	Author	Created	Modified	Usa...	Origin	Location
P15	IMG_0202.JPG	Image	0	Super	11/30/07 0...	11/30/07 ...	***	C:\ppm fol...	***
P16	IMG_0266.JPG	Image	0	Super	11/30/07 0...	11/30/07 ...	***	C:\ppm fol...	***
P17	IMG_0288.JPG	Image	0	Super	11/30/07 0...	11/30/07 ...	***	C:\ppm fol...	***
P18	IMG_0304.JPG	Image	0	Super	11/30/07 0...	11/30/07 ...	***	C:\ppm fol...	***
P19	IMG_0314.JPG	Image	0	Super	11/30/07 0...	11/30/07 ...	***	C:\ppm fol...	***
P20	IMG_0322.JPG	Image	0	Super	11/30/07 0...	11/30/07 ...	***	C:\ppm fol...	***
P21	IMG_0331.JPG~	Image	0	Super	11/30/07 0...	01/16/08 ...	***	C:\ppm fol...	***
P22	IMG_0337.JPG~	Image	0	Super	11/30/07 0...	01/16/08 ...	No	C:\ppm fol...	---
P23	IMG_0389.JPG	Image	0	Super	11/30/07 0...	11/30/07 ...	***	C:\ppm fol...	***
P24	IMG_0390.JPG	Image	0	Super	11/30/07 0...	11/30/07 ...	***	C:\ppm fol...	***
P25	IMG_0391.JPG	Image	0	Super	11/30/07 0...	11/30/07 ...	***	C:\ppm fol...	***

ERIN: This one is healthy because there's no garbage or anything laying around in it.

MODERATOR: And that's the powwow grounds, right?

ERIN: Yes.

CHILD: They clean it up every year.

MODERATOR: All right, so no garbage, it's clean.

ERIN: And the trees are nice and healthy.

JAMIE: Yeah, people like my age would have to go there and pick it up, and you would get paid.

MODERATOR: Why are dead trees unhealthy?

CHILD: I wonder how much.

ERIN: Dead trees are unhealthy because there might . . . because they are . . . I don't know.

Not found: C:\ppm folder\MTS NARCH\Healthy\IMG_0337.JPG

We developed PPM to...

- ❑ Compliment objective measures of built environment (walkability, proximity, etc)
- ❑ Enhance community-based participatory research
- ❑ Better understand people's experience of health and place
- ❑ Realize our shared goal of "healthy people in healthy places"

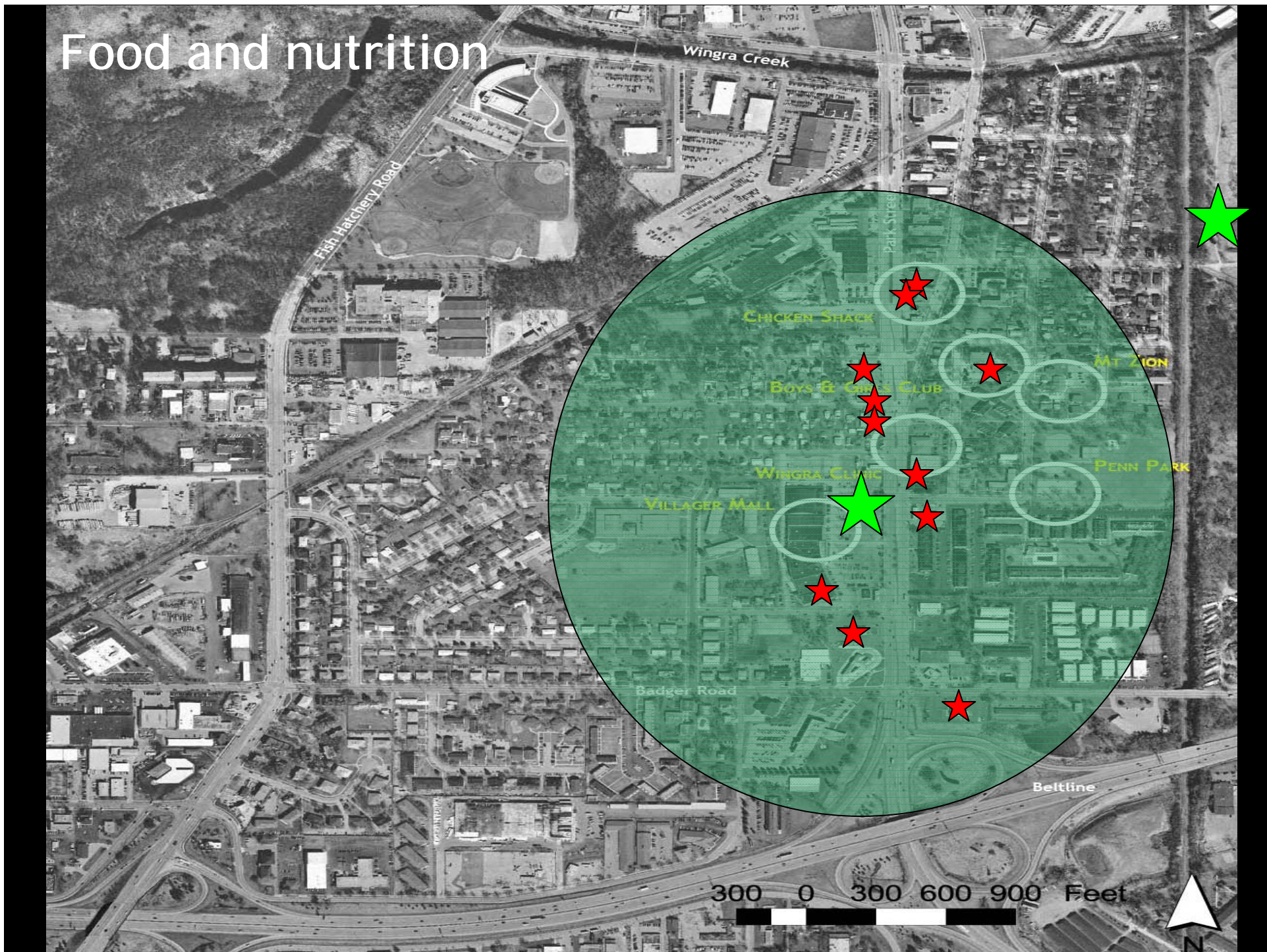
Case Studies & Outcomes

- ❑ Youth Mapping for Safe and Healthy Neighborhoods Initiative (RWJ Health and Society Scholars)
- ❑ Cypress Spray Park - Walking Audit (Public Health, Safe Communities Coalition, MMSD)
- ❑ North Madison Neighborhood Plan - Walking Audit (Public Health, Safe Communities Coalition, Madison Planning Dept.)
- ❑ Healthy Children, Strong Communities, Supportive Environments (NIH U01 HL087381-01, PI: Alexandra Adams, MD, PHD, UW Department of Family Medicine)

Case Studies & Outcomes

- ❑ Youth Mapping for Safe and Healthy Neighborhoods Initiative (RWJ Health and Society Scholars)
- ❑ Cypress Spray Park - Walking Audit (Public Health, Safe Communities Coalition, MMSD)
- ❑ North Madison Neighborhood Plan - Walking Audit (Public Health, Safe Communities Coalition, Madison Planning Dept.)
- ❑ Healthy Children, Strong Communities, Supportive Environments (NIH U01 HL087381-01, PI: Alexandra Adams, MD, PHD, UW Department of Family Medicine)

Food and nutrition



Briana Camera #4 Walk #3



10/05/2006

N 43° 02.444' W 089° 23.667'

893 ft

10/05/2006 4:42:05 PM

Erika Walk #5

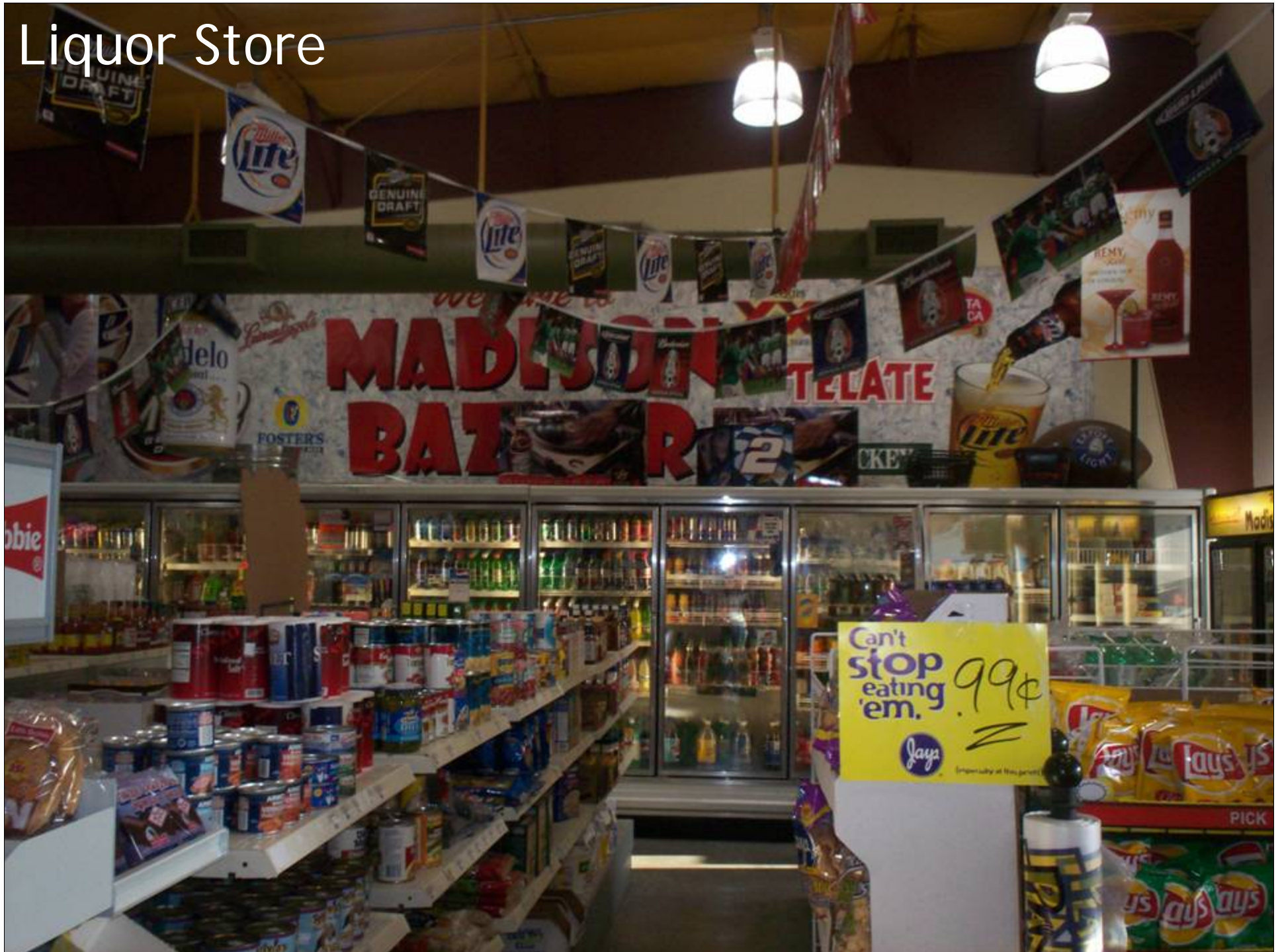


N 43° 02.738' W 089° 23.597'

869 ft

10/19/2006 6:11:48 PM

Liquor Store



Physical activity and outdoor play





Janessa #5 Walk #1



N 43° 02.536' W 089° 23.448'

885 ft

09/21/2006 4:42:57 PM

Shantel #2 Walk #1

T00215



N 43° 02.552' W 089° 23.451'

895 ft

09/21/2006 5:31:31 PM







South Madison Outcomes

- Presentations to all south side police officers
- Neighborhood tours for Wingra and Access clinicians and staff
- South side community health assessment
- Penn Park redesign team
- Splash Park PPM walking audit - Safe Communities Coalition
- Northside neighborhoods - Youth Mapping
- CHAMP - community health assessment mapping partnership



Case Studies & Outcomes

- ❑ Youth Mapping for Safe and Healthy Neighborhoods Initiative (RWJ Health and Society Scholars)
- ❑ Cypress Spray Park - Walking Audit (Public Health, Safe Communities Coalition, MMSD)
- ❑ North Madison Neighborhood Plan - Walking Audit (Public Health, Safe Communities Coalition, Madison Planning Dept.)
- ❑ Healthy Children, Strong Communities, Supportive Environments (NIH U01 HL087381-01, PI: Alexandra Adams, MD, PHD, UW Department of Family Medicine)



Cypress Spray Park Walking Audit - Outcomes

Recommendation/Suggestion	Agency Responsible ?
<p>Reduce speeding on Cypress Way</p> <ul style="list-style-type: none"> •Look at additional traffic calming measures along Cypress Way (in addition to traffic islands), especially at the crest of the hill (blind spots) 	<p>Traffic Engineering MPD</p>
<p>Improve crossing on Cypress Way</p> <ul style="list-style-type: none"> •Hughes (pedestrian entrance to Park) •Crest of hill (blind spots) 	<p>Traffic Engineering</p>
<p>Crossing Park Street</p> <ul style="list-style-type: none"> •Traffic signal at Hughes Place with pedestrian countdown timers and widening of median noses •Straighten and widen median noses at Buick •Improved crossing at Dane (North or South leg?) e.g. pedestrian activated flashing lights at Dane? •Evaluate left turn arrow at Buick to improve ability for pedestrians to cross 	<p>Traffic Engineering Engineering Engineering Traffic Engineering Traffic Engineering</p>
<p>Crossing West Badger</p> <ul style="list-style-type: none"> •Repaint cross walk at Cypress (across Badger) •Improve marked cross walks at bus stops <ul style="list-style-type: none"> - Catalpa (mark?) - Fiedler (repaint) •Sidewalk needed on Southside •Repaint crosswalk on Catalpa & Cypress (at Badger) 	<p>Traffic Engineering Traffic Engineering Town? Traffic Engineering</p>
<p>Improve security at Metro South Transfer Point</p>	<p>Madison Metro</p>
<p>Crossing Fish Hatchery Road</p> <ul style="list-style-type: none"> •Improve crossing at Carver <ul style="list-style-type: none"> - Ped. activated flashing lights (overhead) - Repaint marked cross walk •Median project between Culmen and Martin •Review pedestrian accommodations at Badger •Review pedestrian accommodations at Emil 	<p>Traffic Engineering Traffic Engineering Traffic Engineering Traffic Engineering</p>

Case Studies & Outcomes

- ❑ Youth Mapping for Safe and Healthy Neighborhoods Initiative (RWJ Health and Society Scholars)
- ❑ Cypress Spray Park - Walking Audit (Public Health, Safe Communities Coalition, MMSD)
- ❑ North Madison Neighborhood Plan - Walking Audit (Public Health, Safe Communities Coalition, Madison Planning Dept.)
- ❑ Healthy Children, Strong Communities, Supportive Environments (NIH U01 HL087381-01, PI: Alexandra Adams, MD, PHD, UW Department of Family Medicine)

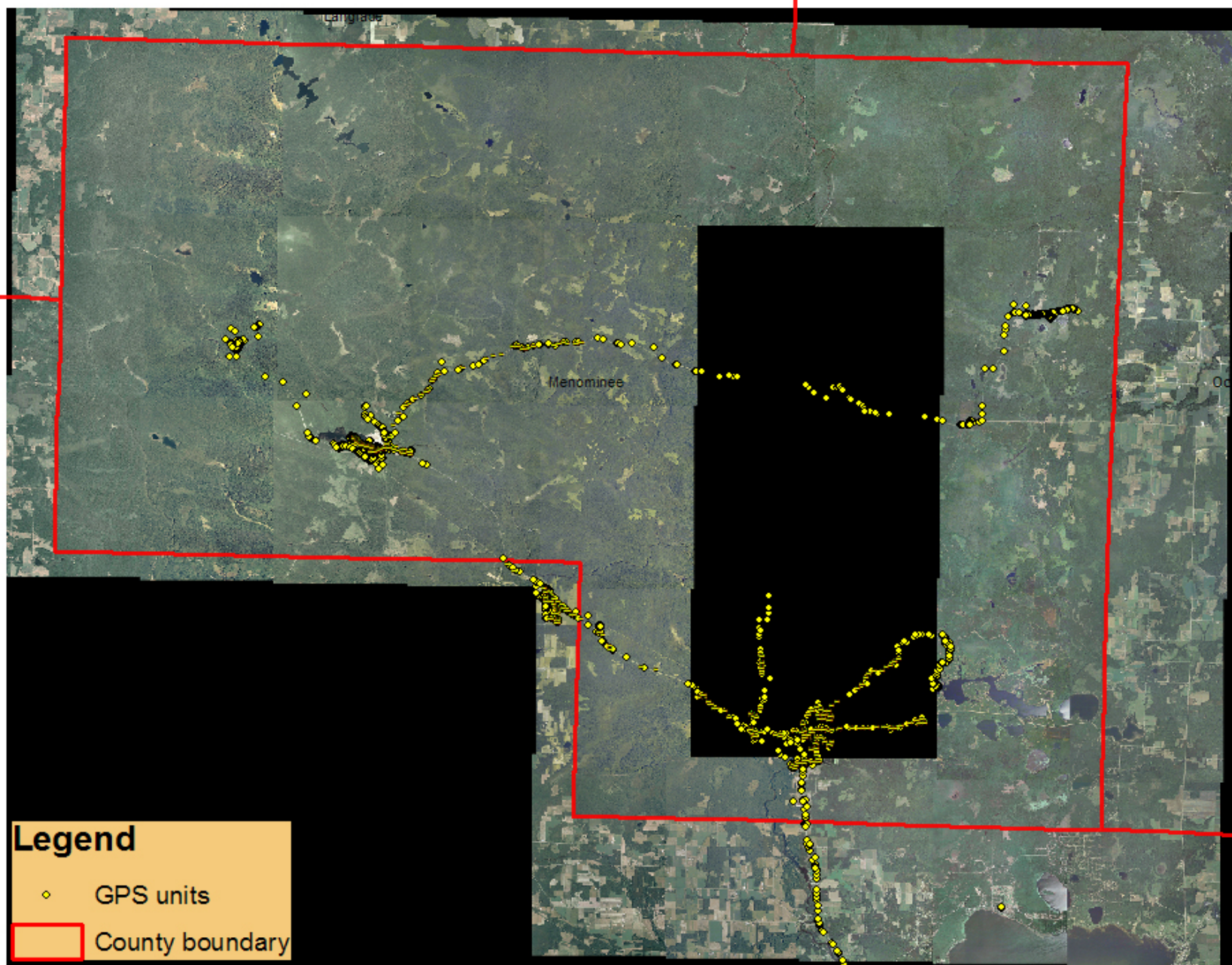




09/19/2007

Case Studies & Outcomes

- ❑ Youth Mapping for Safe and Healthy Neighborhoods Initiative (RWJ Health and Society Scholars)
- ❑ Cypress Spray Park - Walking Audit (Public Health, Safe Communities Coalition, MMSD)
- ❑ North Madison Neighborhood Plan - Walking Audit (Public Health, Safe Communities Coalition, Madison Planning Dept.)
- ❑ **Healthy Children, Strong Communities, Supportive Environments (NIH U01 HL087381-01, PI: Alexandra Adams, MD, PHD, UW Department of Family Medicine)**



Legend

- ◆ GPS units
- ▭ County boundary

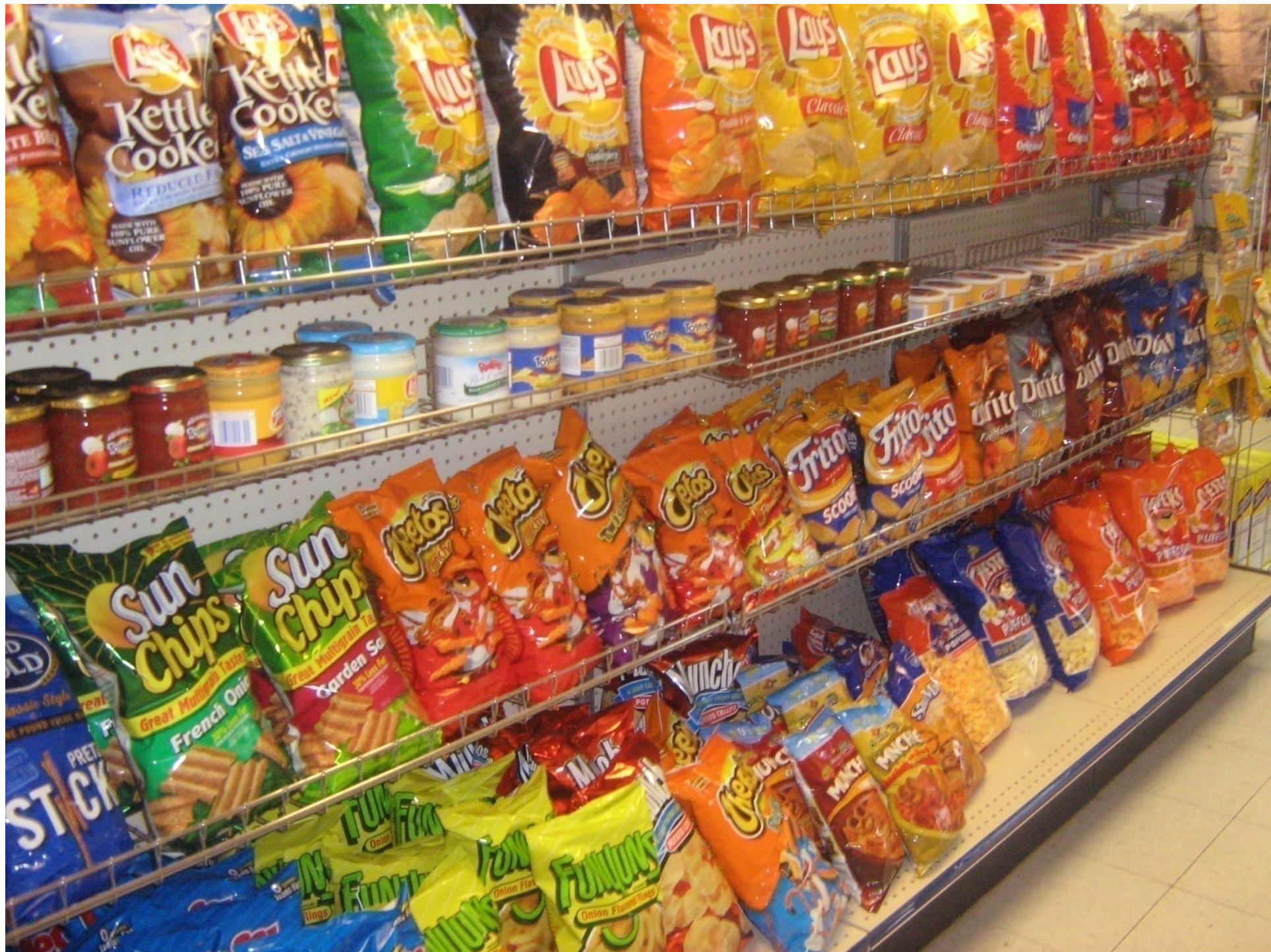


Menominee, WI, 2007

WI









Healthy or Unhealthy?



New ways of thinking about old problems?

- ❑ Concepts and theories being generated by our transdisciplinary collaboration
- ❑ Food environment: access *and* intake
- ❑ Recreation Environment: proximity *and* participation
- ❑ Informing interventions and policies that respond to local cultural context

Thank You!

Samuel F. Dennis, Jr. PhD, ASLA, *sfdennisjr@wisc.edu*

Suzanne Gaulocher, MA, MPH, *gaulocher@wisc.edu*

Pamela McGranahan, MSN, *PMcGranahan@publichealthmdc.com*