



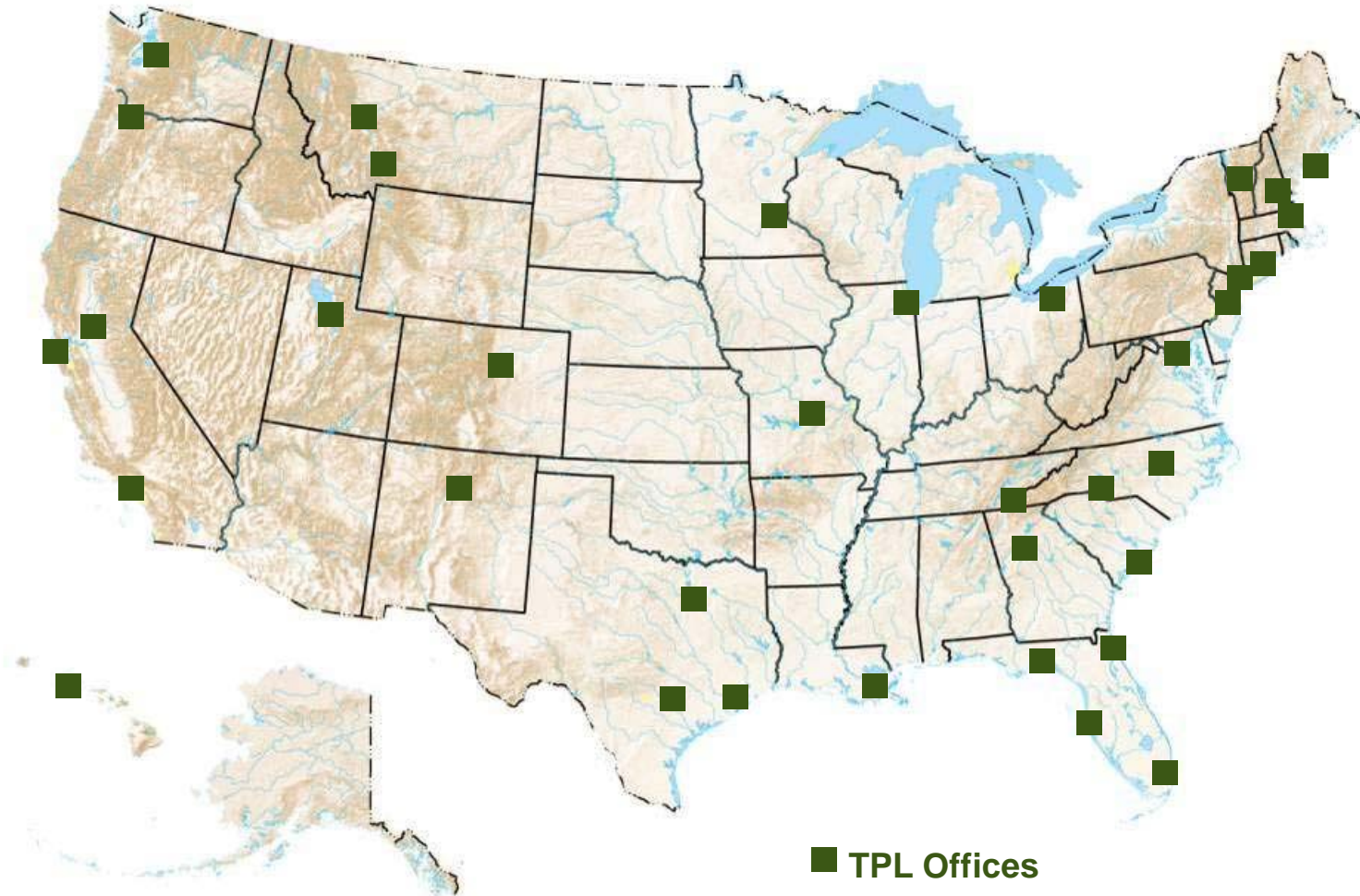
---

THE  
TRUST  
*for*  
PUBLIC  
LAND

---



# 40 offices, 1000 Staff and Volunteers

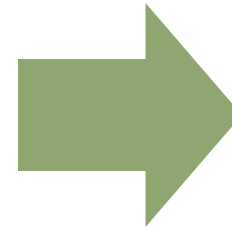




# TPL's Five Initiatives



# Parks Have Many Benefits



**Cleaner Air &  
Water**

**Better Health**

**Reduced Crime**

**Stronger  
Economy**

**Stronger  
Community**

# Park Design & Development

## *Building Parks*

TPL helps transform newly acquired or existing sites into parks, playgrounds, or restored natural areas.

TPL employs a participatory design process and solicits the viewpoints of all stakeholders.





# Parks for People—San Francisco Initiative

- \$16 Million Initiative to re-build 3 Parks in One City
- All in High-Need Neighborhoods
- Opportunity to Measure Impact on Physical Activity



Hayes Valley Playground



Balboa Park



Boeddeker Park

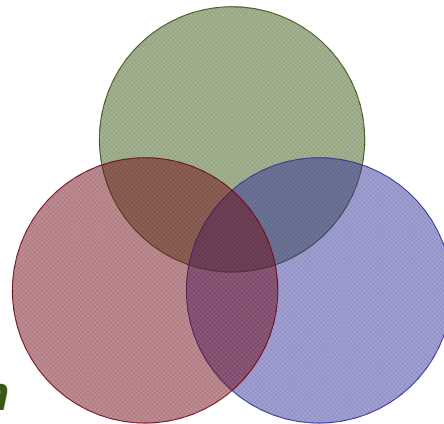
# Partnership

“Park Renovation Impact on Physical Activity Among Youth”

*The Trust for Public Land  
(Park Design)*

*RAND Corporation  
(Survey)*

*SF Dept. of Public Health  
(Context Data)*



# Survey – SOPARC

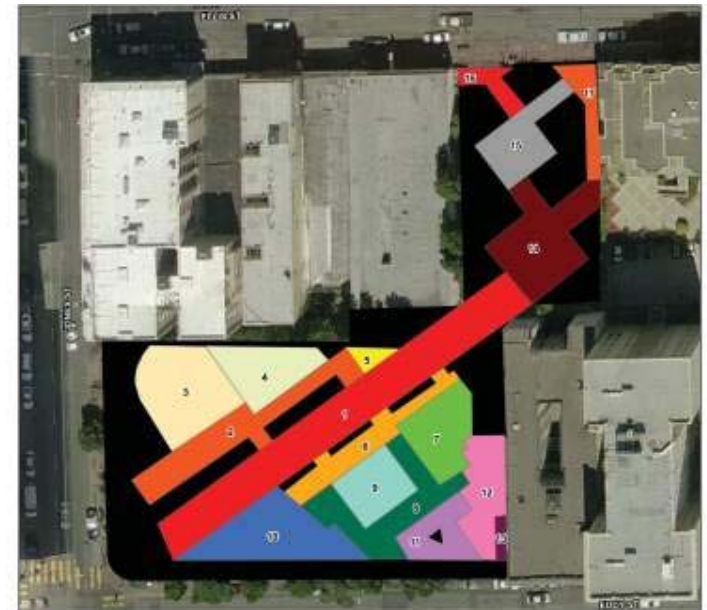
- Park Use Observation
- Resident & Park User Surveys



Boeddeker Park

San Francisco Department of Public Health, Environmental Health and San Francisco Recreation and Park Department

- 1, Paving
- 2, Seating
- 3, Basketball Court
- 4, DG Area
- 5, Stage
- 6, Seating
- 7, Play Area
- 8, Paving
- 9, Grass
- 10, Grass
- 11, Paving
- 12, Rec Center
- 13, Computer Room
- 14, Paving
- 15, Paving
- 16, Paving
- 17, Paving
- Do Not Survey

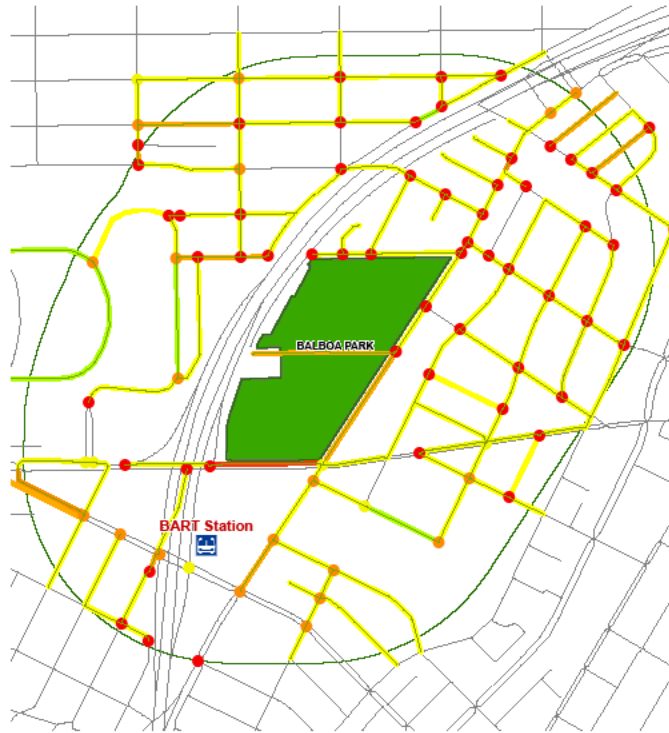


Boeddeker Park

San Francisco Department of Public Health, Environmental Health and San Francisco Recreation and Park Department



# Pedestrian Environmental Quality Index (PEQI)



**PEQI: Intersection Score**

- 0 - 20
- 21 - 40
- 41 - 60
- 61 - 75
- 76 - 100
- 🚏 bart\_station

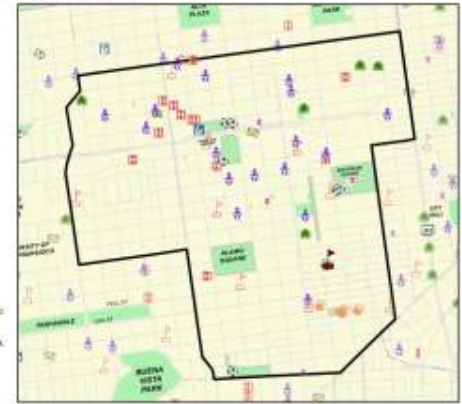
**PEQI: Street Score, North/East Side**

- 28 - 30
- 31 - 40
- 41 - 60
- 61 - 75
- 76 - 100

## San Francisco Neighborhood Completeness

Key Public Services in Western Addition

- 🏠 Hayes Valley Playground
- 👶 Child Care Center
- 📮 Post Office
- 🎨 Arts Venue
- 🌿 Community Garden
- 🏥 Hospital
- 📖 Library
- 🎭 Art Installation
- 🏞️ Recreation Facility
- 🎓 Public School
- 🌳 Park At Least 1/2 Acre
- 🌿 Open Space

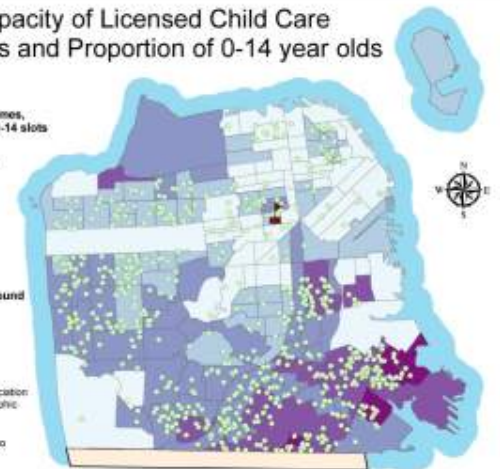


Sources: San Francisco Department of Public Health, 2007 and 2008; San Francisco Department of Children, Youth and Their Families, 2007; San Francisco Food Systems, 2007; San Francisco Recreation and Park Department, 2008; San Francisco Arts Commission, 2002

City and County of San Francisco Department of Public Health Environmental Health Section

## Maximum Capacity of Licensed Child Care Family Homes and Proportion of 0-14 year olds

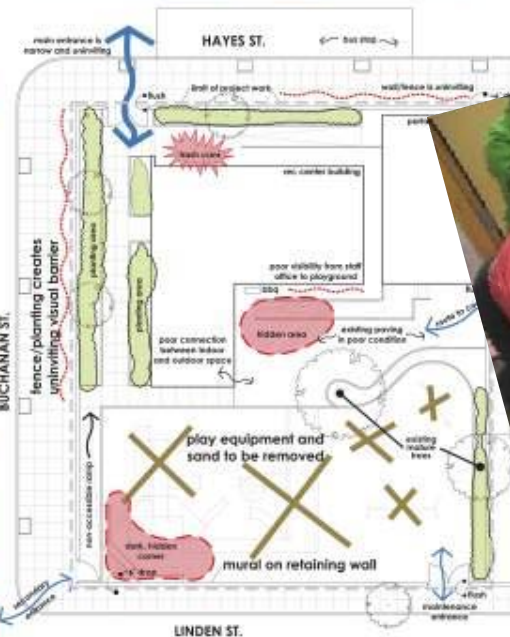
- 🏠 Family child care homes, maximum capacity 8-14 slots
- % of population 0-14 yrs
  - 4% - 9%
  - 10% - 13%
  - 14% - 18%
  - 19% - 26%
  - 27% - 37%
- 🏠 Hayes Valley Playground



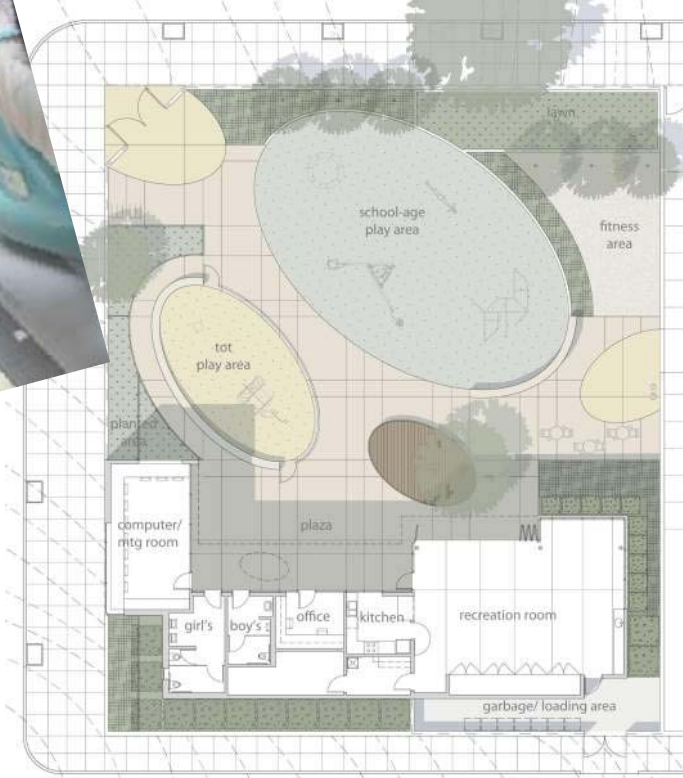
Source: Family Child Care Association of SF, 2006 and Applied Geographic Solutions 2007

City and County of San Francisco Department of Public Health Environmental Health Section

# Community Outreach – Park Design



3



1

2



# Community Outreach - Techniques





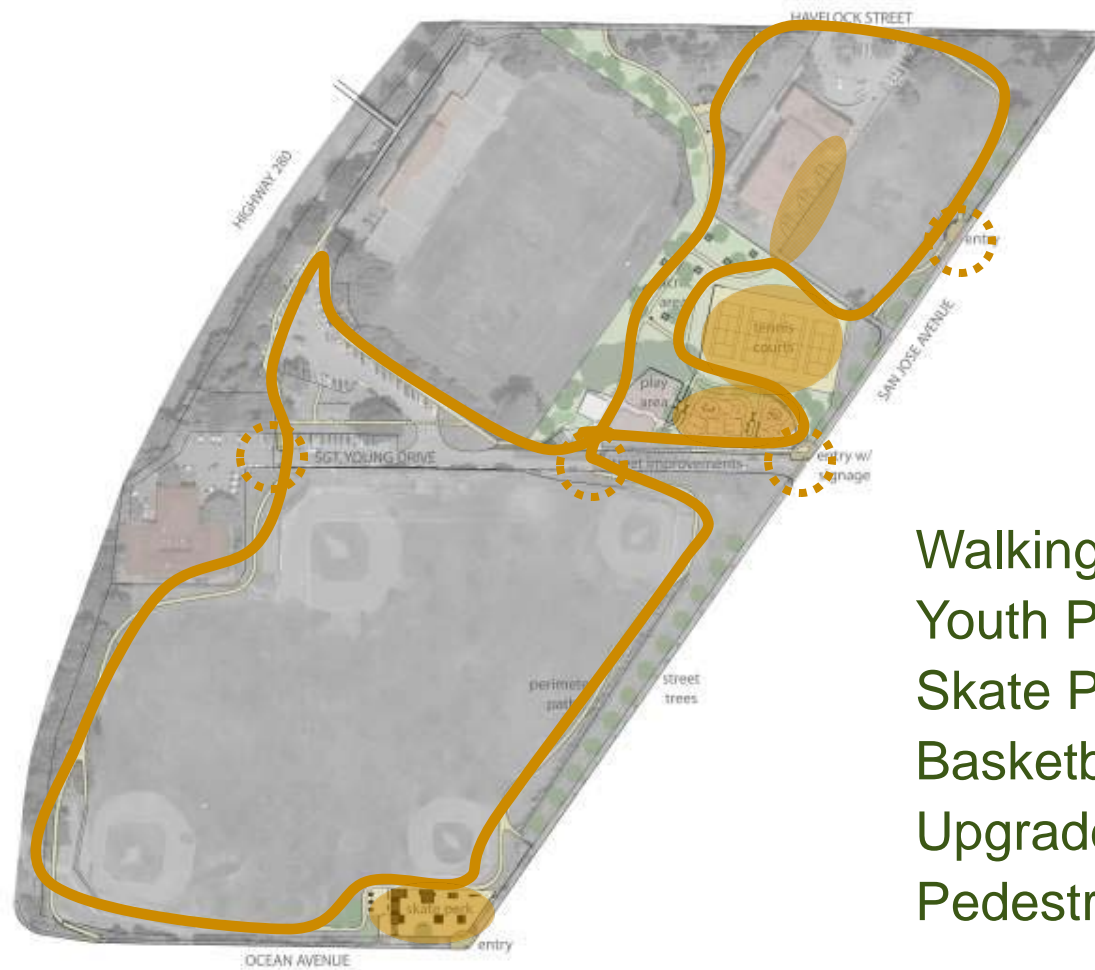
# Design – Hayes Valley Playground



Active play equipment  
Fitness equipment  
Community gardening  
Support features



# Design – Balboa Park



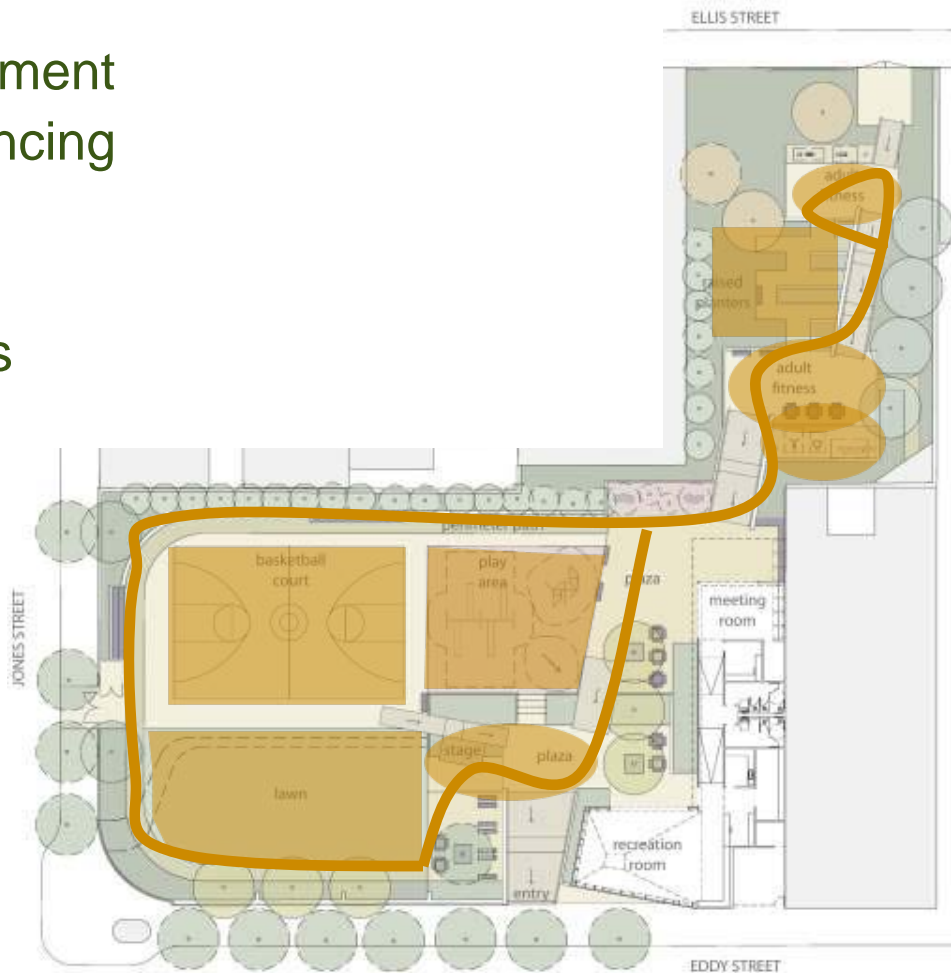
- Walking Paths
- Youth Play Area
- Skate Park
- Basketball
- Upgrade Tennis
- Pedestrian Safety





# Design – Boeddeker Park

- Fitness Equipment
- T'ai Chi & Dancing
- Play Area
- Basketball
- Walking Paths
- Gardening
- Play Lawn

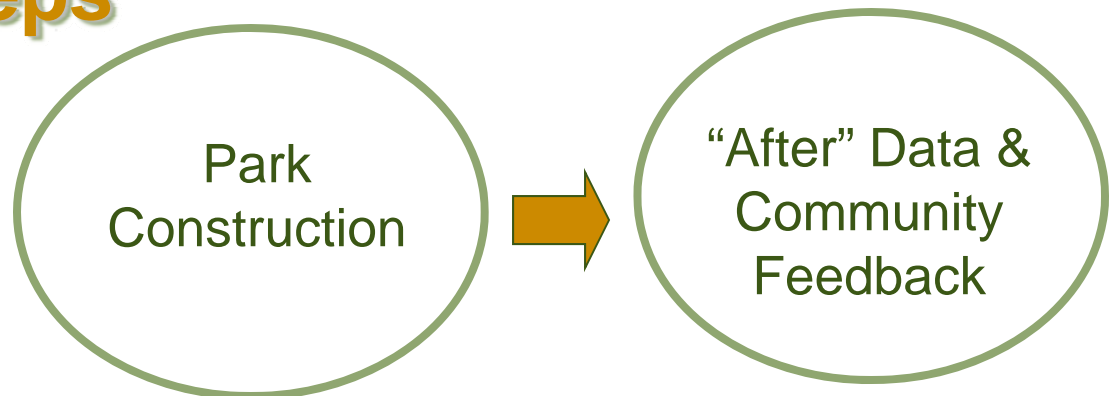




## Conclusion



## Next Steps





---

THE  
TRUST  
*for*  
PUBLIC  
LAND

---

