

Fogarty International Center

# Prevention of Childhood Overweight and Obesity in Latin America: Opportunities in Science and Policy

**Nalini P. Anand JD, MPH**

Director, Division of International Science Policy, Planning and Evaluation

Director, Center for Global Health Studies

Fogarty International Center

**Active Living Research Annual Conference**

*Feb 2015*



Fogarty International Center

# Center for Global Health Studies

---



- Hub for project-based scholarship in global health science, implementation research and policy
- Stimulates scientific community and other stakeholders around research agendas
- Catalyzes multi-disciplinary research collaborations

# Why Now? Why Latin America?

## PREVENTING CHILDHOOD OBESITY IN LATIN AMERICA: LINKING EVIDENCE TO POLICY AND PRACTICE



**OCTOBER 28-30, 2014**  
CENTER FOR GLOBAL HEALTH STUDIES  
FOGARTY INTERNATIONAL CENTER  
NATIONAL INSTITUTES OF HEALTH



- Increased focus on NCDs at NIH
- Obesity and sedentary lifestyles key risk factors
- Robust implementation science agenda

## Latin America

- Rapid nutrition and demographic transitions
- Numerous intervention rollouts
- Potential to inform US efforts



# Prevention of Childhood Overweight and Obesity in Latin America: Opportunities in Science and Policy

Partners: OBSSR, NICHD, NHLBI, NIDDK, CDC, OGA, PAHO

Workshop and Writer's Retreat

**Supplement** in *American Journal of Clinical Nutrition*

- Landscape
- Research priorities
- Research to policy
- Capacity building priorities

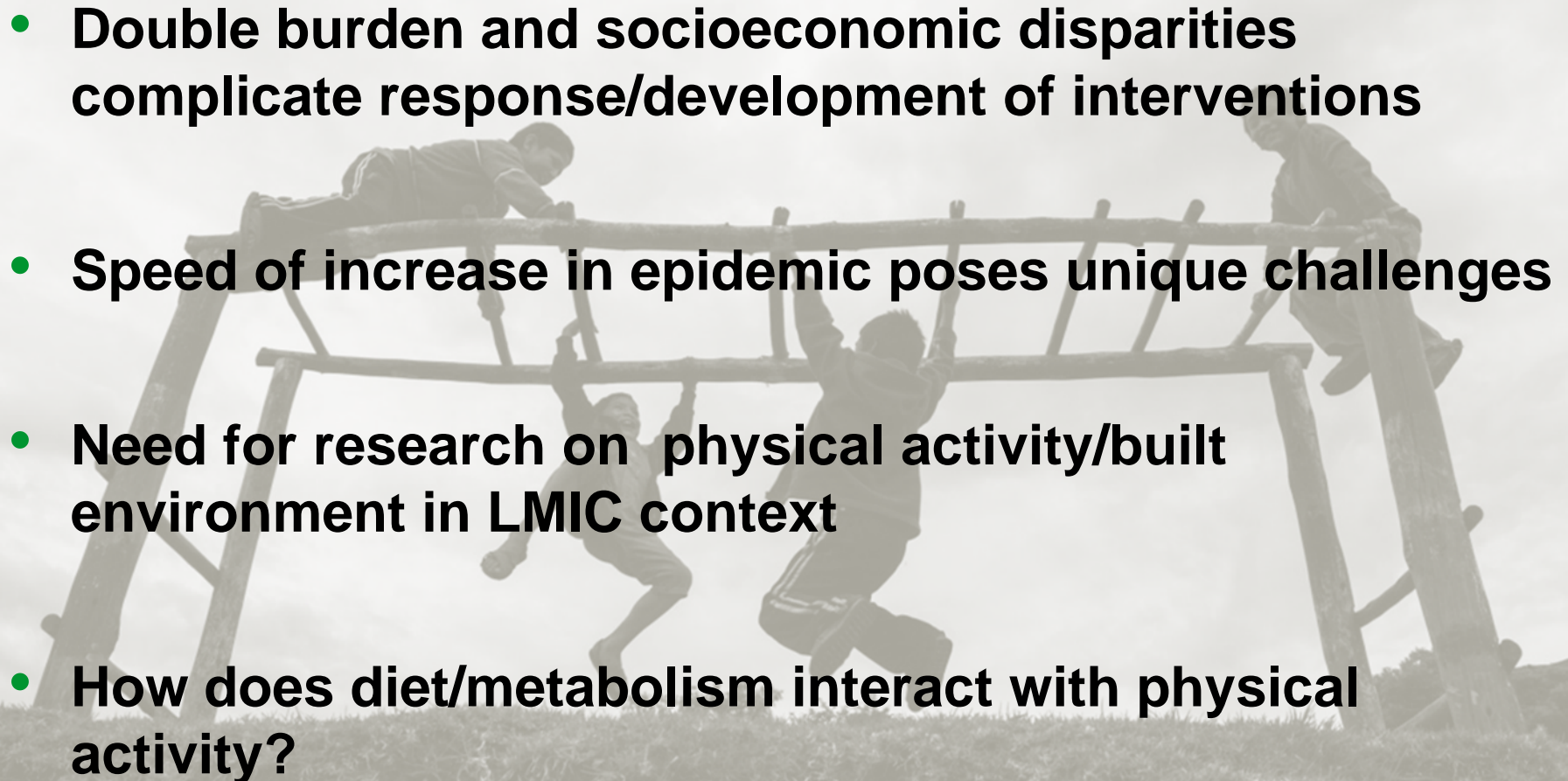
**Dissemination**

- Symposium at LA Society of Nutrition meeting (Nov 2015)
- Other events

Multi-disciplinary  
**Workshop/Training**

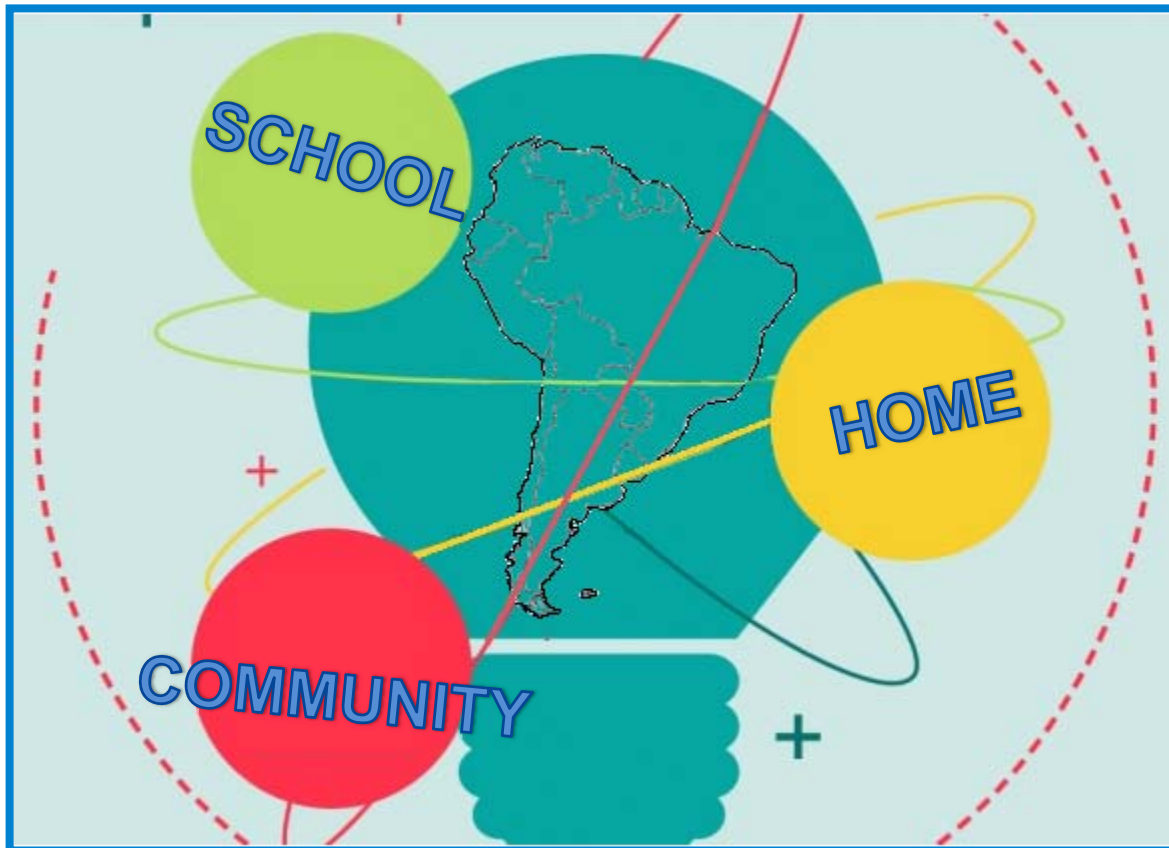


# Key Emerging Themes from Workshop

- **Double burden and socioeconomic disparities complicate response/development of interventions**
  - **Speed of increase in epidemic poses unique challenges**
  - **Need for research on physical activity/built environment in LMIC context**
  - **How does diet/metabolism interact with physical activity?**
- 
- A faded background image showing several children playing on a wooden play structure in a grassy field. The structure consists of a horizontal beam supported by two vertical posts, with several smaller vertical posts extending upwards from the beam. The children are in various positions: some are climbing, some are hanging from the beam, and one is sitting on top. The overall scene is bright and outdoors.

# Key Themes from Workshop cont'd

- Need interventions that impact multiple risk factors
- Multi-pronged approach (school, home, community)



- Importance of different disciplines working together
- Researchers working with civil society and policymakers – challenges and opportunities